



## Treetop Tales

### Hōtoke-Kōanga (Winter-Spring) 2022

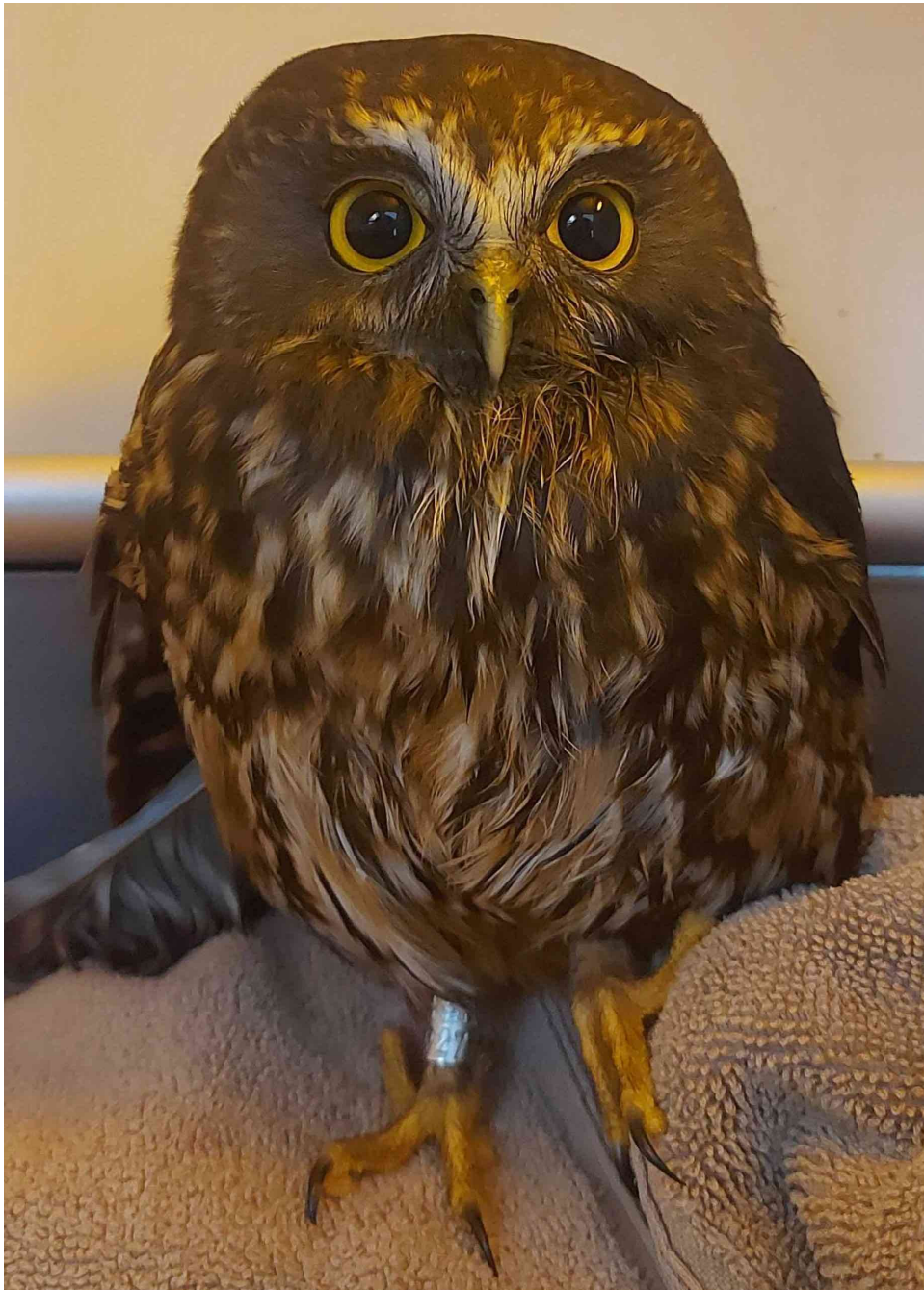
---

Kia ora Bianka,

Welcome to Treetop Tales, a roundup of the latest news, advice, events and other happenings at BirdCare Aotearoa – especially for our wonderful supporters.

We've had a steady winter season, with a late botulism season trailing into winter – no doubt due partly to the unseasonably warm temperatures. Our winter season patients unfortunately tend to be the result of preventable anthropomorphic issues. Like last year, many of our patients have been kererū recovering from window strikes, songbirds recovering from cat attacks, and ducks who have been hit by cars.

As the ducklings start trickling into the centre, and we begin to receive reports of nesting masked lapwing and pūkeko (with the season's first lapwing chick now in care!), we're gearing up for another extremely busy spring and summer.



One of 16 ruru admitted to BirdCare Aotearoa over winter, many of whom arrived with head trauma.

---

## Vote Cookie for Bird of the Year!

Have you heard we're running our first-ever Bird of the Year (BOTY) campaign? That's right – we're proud to be campaigning for the [Cook's petrel](#) for **BOTY 2022!**

To celebrate our campaign, **Tania Mallow Jewellery** is releasing a second (and final) batch of ten [Cook's petrel necklaces](#), with 10% of sales going to BirdCare. Keep an eye on [Tania's website](#) to make sure you don't miss out!



One of the many reasons Cookie thinks you should #votecookie for BOTY 2022.

Follow our campaign at the links below and be sure to #votecookie when BOTY voting opens on 17 October.

#votecookie on Facebook

#votecookie on Instagram

#votecookie on Twitter

## Regular giving made easier

You'll be pleased to hear we've updated our website to make it easier for you to sign up for [regular giving](#).

Regular donations give us stability, allow us to plan for the future, and ensure that our doors can remain open. BirdCare needs around \$650,000 a year to function, so **every dollar counts**. Even \$5 a week – the cost of a coffee – helps immensely.

This money funds high quality food for our patients, medical supplies and equipment, and our vet/clinician and tiny team who manage the much larger team of volunteers. **This money saves lives.**

A massive **thank you to our existing regular donors** and also to our **brand new regular donors** who [signed up](#) this month. You are all wonderful. ❤️

Keep our doors open for wild birds



This beautiful tauhou (silveryeye) was not only covered in a sticky substance but also survived a cat attack. Your support enabled our team to nurse this little bird back to health so that he could be released back into nature.

Join our vet Dani as she completes a physical exam on a silveryeye

---

## Moho pererū release

Thanks to your support, **we released three moho pererū (banded rails)**, whom we'd raised from hatch. Special thanks to those of you who donated towards the care of these birds during their many months at BirdCare (they had very discerning taste in food!).

Watch the video of the rails' journey





One of three moho pererū released by BirdCare at Matuku Link in May 2022.

Image credit: Roger Mills, [Hummingbird Video and Photography](#)

---

## Save the dates!

We have some great events coming up, including:

### **Generosity Generator Crowdfunding Campaign (15 – 29 September 2022)**

We're working on an exciting crowdfunding campaign. It goes live on Givealittle on Thursday 15 September and we can't wait to share it with you! Stay tuned for more details over the coming weeks.

### **Tabletop Exercise – Building Community Preparedness to Protect Wildlife (18 October 2022)**

[This event](#), which is part of the [Auckland Climate Festival](#), will bring together individuals and agencies who play a role in protecting wildlife from the impacts of an extreme weather event. For more information and to register your interest, please email [lynn.miller@birdcareaotearoa.org.nz](mailto:lynn.miller@birdcareaotearoa.org.nz).

### **Auckland Marathon (30 October 2022)**

Following the success of our amazing runners and walkers in Round the Bays, we're now winging our way towards a marathon! There's still time to train and, if you prefer, there are shorter distances and a kid's option available. [Sign up](#) today! 🏃

Stay in the loop by visiting our [Events page](#)

---

## Patient spotlight: kōtare returns



Kōtare with DOC band on right leg and BirdCare Aotearoa temporary in-house band on left leg.

This young kōtare arrived with an injured wing... and a Department of Conservation leg band! We were thrilled to find that this was one of the kōtare we had raised in our nursery last season. He had been thriving in the wild for several months post-release, until his accident. He was otherwise healthy and had a great body condition score. This is such useful information for us, as it shows that our young kingfishers are doing well following rehabilitation and release. After vet care, pain relief, bandaging, laser therapy, and physio, this little one was ready to be released for a second time. Fly safely little kōtare!

[See more photos and the \(second!\) release video](#)

---

## Life-saving medical equipment

**Thanks to the [Mazda Foundation](#)**, this month we were able to purchase two new infusion pumps and two cold laser therapy units! This essential equipment will make a huge difference to the care of our patients.



## How would you like to support us?

As our **admissions increase every year**, we need your help now more than ever before. Besides monetary donations, there are [many ways you can support us](#) to provide **life-saving care** for birds, including:

- Making [in-kind donations](#) of food, veterinary supplies, building materials and other items
- Buying gifts that support our birds (scroll down to see our fabulous new [merchandise](#) from local artists!)
- Donating/sponsoring merchandise for us to sell
- Telling other people about BirdCare and encouraging them to support us
- Connecting us with businesses who would like to sponsor or partner with us
- [Volunteering](#) at the centre...or outside the centre – if your community group, school or workplace would like to organise a fundraiser for BirdCare or participate in a working bee, please email [volunteer@birdcareaotearoa.org.nz](mailto:volunteer@birdcareaotearoa.org.nz).

---

## BirdCare Aotearoa recognised as environmental champion

We were delighted to receive a Highly Commended in the 2022 [EcoMatters Love Your Place Awards](#). **A huge and heartfelt thanks to all our amazing volunteers**, who are the heart of BirdCare and whom this award recognises.





Awesome volunteers Kathy Neilson and Peter Luker, with Dr Lynn Miller (centre) at the EcoMatters Awards evening.

Image credit John Rata for EcoMatters

## Support local artists and local birdlife

We've partnered with some talented and generous bird-loving jewellers, photographers, crafters, and designers. Choose a unique gift for a loved one (or yourself!) and get your Christmas shopping sorted early, while also supporting local artists and our precious birdlife.

Original Prints\* Designed Exclusively for BirdCare Aotearoa



Tea Towel (\$30)

Chick Yellow AG Greetings Card (\$5)

Blue Thrush AG Greetings Card (\$5)

Black Robin on Puriri Notelet Card (\$5)

Chick Orange Notelet Card (\$5)

Black Robin on Puriri Gift Card (set of 3) (\$2.50)

Black Robin on Puriri AG Greetings Card (\$5)

Blue Thrushes Square Greetings Card (\$5)

Piwaka-waka AG Greetings Card (\$5)

100% Profit goes to supporting BirdCare Aotearoa's work. BUY YOURS NOW!!

\* Designs created from original acrylic and ink paintings & prints by Diana Murray (nee Hughes) born and bred in Green Bay and now living in Whangarei. [www.heritageprintz.co.nz](http://www.heritageprintz.co.nz)



HeritagePrintz tea towels and gift cards, designed exclusively for BirdCare Aotearoa (top) and limited edition Cook's petrel necklace, designed and created by Tania Mallow.



# "Is it a pārerā, pāpango, pūtangitangi or...a mallard?"

Ever had trouble identifying a duckling? We're confident our new **Wild Duckling Identification Guide** will help you! Thanks to volunteer Kim Frakes for all her work on what we're sure will be a very helpful resource. If you'd like a copy, please email [lynn.miller@birdcareaotearoa.org.nz](mailto:lynn.miller@birdcareaotearoa.org.nz).

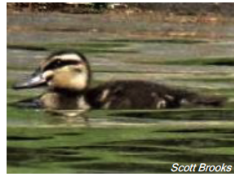
## Duckling Identification Guide



### Wild Ducklings in New Zealand



Mallard  
(*Anas platyrhynchos*)  
Details on pages 2, 5 and 6



Grey duck/pārerā  
(*Anas superciliosa superciliosa*)  
Details on pages 2, 7 and 8



North Island brown teal/pāteke  
(*Anas chlorotis*)  
Details on pages 2, 9 and 10



Grey teal/tētē  
(*Anas gracilis*)  
Details on pages 2, 11 and 12



New Zealand shoveler/kuruwhengi  
(*Anas rhynchos variegata*)  
Details on pages 3, 13 and 14



New Zealand scaup/pāpango  
(*Aythya novaeseelandiae*)  
Details on pages 3, 15 and 16



Blue duck/whio  
(*Hymenolaimus malacorhynchos*)  
Details on pages 3, 17 and 18



Paradise shelduck/  
pūtangitangi  
(*Tadorna variegata*)  
Details on pages 3, 19 and 20

## Art auctions celebrate birdlife

We're incredibly grateful for the generosity of two talented artists who created one-off, original artworks to support BirdCare. Cathy Brickhill of [Cathy Jane Designs](#) created a stunning moho pererū (banded rail) sculptural embroidery and [Olivia Bezett](#) created a beautiful pīwakawaka (fantail) drawing.

*"As soon as I laid my eyes on the artwork I was captured by its beauty, and then also by its intricate level of detail... He looks as though he has a little (whimsical) smile on his face and has a character all of his own. I am sure it will be one of my most prized possessions."*  
- Message from the new custodian of Cathy's artwork

**We love collaborating with artists!** If you or anyone you know would like to donate an artwork or a portion of the proceeds of the sale of your art, please get in touch.

## Hot off the press



If you haven't visited our website recently, check out the [latest stories](#) about botulism and the 2021-22 nursery review.

---

## Birds currently in care

69

at BirdCare Aotearoa, Green Bay, Auckland

**Native:** 2 coot, 1 kahu (harrier hawk), 1 kakīānau (black swan), 1 karoro (black-backed gull), 1 kawaupaka (little shag), 9 kererū, 1 kōtare (sacred kingfisher), 1 moho pererū (banded rail), 2 pūkeko, 1 masked lapwing (spur-winged plover), 1 ōi (grey-faced petrel), 2 ruru (morepork), 2 tauhou (silveryeye), 1 tōrea (New Zealand pied oystercatcher), 1 tūī

**Non-native:** 5 Barbary doves, 1 blackbird, 1 domestic chicken, 1 magpie, 19 mallards, 3 Muscovy ducks, 12 rock pigeons

**Thank you to everyone who rescued a bird, donated, volunteered, told a friend or neighbour about us, or supported us in any way. We couldn't do this without you!**

---

## Birds released – thanks to you!

253

birds released since 12 May 2022

**Native:** 1 kahu (harrier hawk), 1 kākā (brown parrot), 3 kakīānau (black swan), 10 karoro (black-backed gull), 12 kererū, 1 kororā (little blue penguin), 9 kōtare (sacred kingfisher), 2 masked lapwing (spur-winged plover), 1

matuku moana (white-faced heron), 3 moho pererū (banded rail), 2 pīwakawaka (fantail), 5 pūkeko, 1 pūtangitangi (paradise duck), 4 ruru (morepork), 3 tarāpunga (red-billed gull), 9 tauhou (silvereye), 1 tītī (Cook's petrel), 2 tōrea pango (variable oystercatcher), 5 tūī, 1 warou (welcome swallow)

**Non-native:** 6 Barbary doves, 7 blackbirds, 3 domestic chickens, 5 domestic ducks, 1 goldfinch, 8 Malay doves, 92 mallards, 3 Muscovy ducks, 1 myna, 3 quails, 42 rock pigeons, 2 song thrush, 4 sparrows

**Because of you, these birds got a second chance at life. Thank you for caring!**



Kakīānau (black swan) who arrived at BirdCare underweight and dehydrated, and with a gastrointestinal infection. She was characterised as "feisty," chasing our staff members every time she was fed. Even at her release, she turned to face Dani and Chris who released her, before confronting a curious pūkeko.

---

**We think you're wonderful** ❤️

Thank you so much for your ongoing support and for reading our latest updates. Our ability to continue looking after the beautiful birds around us depends on the kindness and generosity of people like you. **Now, more than ever, we need your help to keep our doors open to all wild birds.**

If you'd like to have a chat about how you can support us, please call us on 027 816 9219 or email Bianca [support@birdcareaotearoa.org.nz](mailto:support@birdcareaotearoa.org.nz) or Lynn [lynn.miller@birdcareaotearoa.org.nz](mailto:lynn.miller@birdcareaotearoa.org.nz) . We'd love to hear from you!

Ngā mihi,

Bianka and the BirdCare Aotearoa team

---

# Thank you to our partners

Thank you to our [partners and sponsors](#) for supporting us to give wild birds a second chance at life.



Everything we do is thanks to the support of people like you!

Please help us keep our doors open by becoming a regular donor.

Become a regular donor today!

## Connect with us

[Website](#)

[Facebook](#)

[Instagram](#)

[Twitter](#)

[LinkedIn](#)